



ABOUT COMSTOCK OIL & GAS

Comstock Oil & Gas operates a natural gas gathering system in Texas and Louisiana. Permanent markers have been installed along the pipeline system for identification. If you plan to do any type of digging, you should contact the State's utility damage prevention service by dialing 811, or visiting their website at least 48 hours in advance. This will prompt all utility operators in the vicinity to provide temporary markings of pipeline facilities and meet with excavators if needed. If necessary, Comstock Oil & Gas will witness the excavation activity.

WHAT DOES COMSTOCK OIL & GAS DO IF A LEAK OCCURS?

To prepare for the event of a leak, pipeline companies regularly communicate, plan and train with local emergency responders. Upon the notification of an incident or leak the pipeline company will immediately dispatch trained personnel to assist emergency responders.

Pipeline operators and emergency responders are trained to protect life, property and facilities in the case of an emergency.

Pipeline operators will also take steps to minimize the amount of product that leaks out and to isolate the pipeline emergency.

MAINTAINING SAFETY AND INTEGRITY OF PIPELINES

Comstock Oil & Gas invests significant time and capital maintaining the quality and integrity of their pipeline systems. Comstock Oil & Gas utilizes on-ground observers to identify potential dangers. Automatic shut-off valves are sometimes utilized to isolate a leak.

Specific information about Comstock Oil & Gas program may be found on our Web site, or by contacting us directly.



PRODUCTS TRANSPORTED

Product: Natural Gas

Leak Type: Gas

Vapors: Lighter than air and will generally rise and dissipate. May gather in a confined space and travel to a source.

Health Hazards: Will be easily ignited by heat, sparks or flames and will form explosive mixtures with air. Vapors may cause dizziness or asphyxiation without warning and may be toxic if inhaled at high concentrations. Contact with gas or liquefied gas may cause burns, severe injury and/or frostbite.

EMERGENCY CONTACT:

1-800-929-4884

PRODUCTS/DOT GUIDEBOOK ID#/GUIDE#:

Natural Gas	1971	115
-------------	------	-----

LOUISIANA PARISHES OF OPERATION:

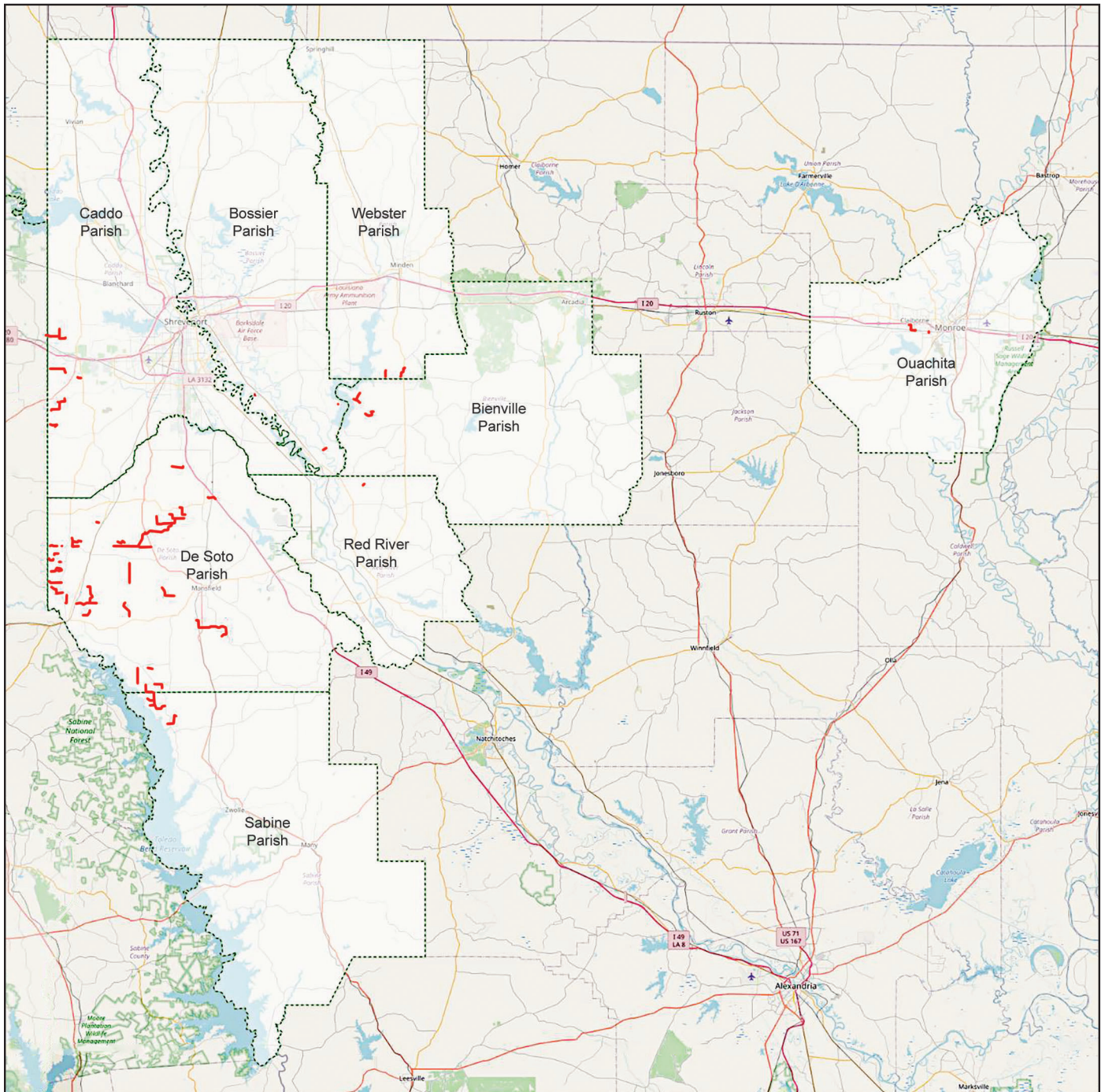
Bienville	Ouachita
Bossier	Red River
Caddo	Sabine
De Soto	Webster

Changes may occur. Contact the operator to discuss their pipeline systems and areas of operation.

HOW TO GET ADDITIONAL INFORMATION

For additional information visit our web site at www.comstockresources.com or contact us at 972-668-8800.





Base map courtesy of [openstreetmap.org](https://www.openstreetmap.org)

